

# SOLAR SOLUTIONS FOR CHURCHES

---

Honouring tradition. Embracing innovation.





# SUPPORTING THE LEAP TO SOLAR

Clearing the path to a sustainable future



## A CONSIDERED CHANGE

Churches are finding new ways to run their buildings more efficiently and affordably. Many are turning to greener energy as part of that shift, but it's a decision that must be made with care.

These decisions often reflect a deeper set of values that go beyond practicality – rooted in stewardship for both the buildings' heritage and the communities they serve. Preserving the character of these much-loved buildings is therefore key to taking a thoughtful step towards a more sustainable future.

## FUNDING THE PATH TO NET ZERO

Many churches are now supporting renewable energy projects. The Church of England, for example, has committed to reaching net zero carbon by 2030, and offers funding and guidance to help parishes reduce their environmental impact. Additionally, for churches that are registered charities, a 0% VAT rate applies to renewable energy installations, making these improvements more affordable.

Solar remains one of the most accessible and effective ways to make use of available funding. It's cost-effective, low-maintenance, and can be tailored to the specific needs of each church – offering a practical route to long-term sustainability.

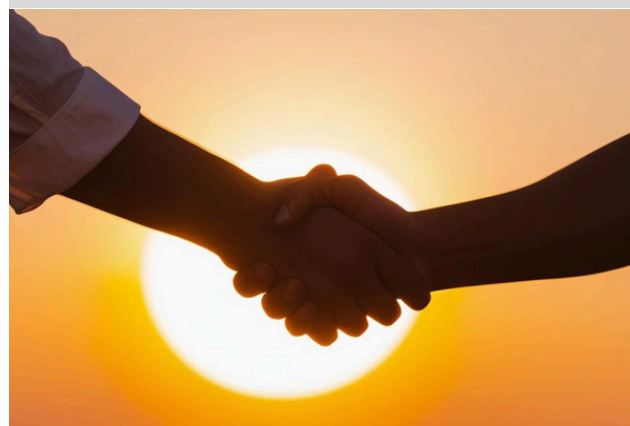
**For further guidance on funding, please contact our team for more information.**

“St. Georges Church, with its rich heritage, now embraces a future-oriented approach... The 57 kWp solar array not only reduces the church's environmental impact but also serves as a symbol of responsible energy use within the community, bridging the gap between tradition and innovation... we're keen to respond to the Church of England's challenge for our buildings to be 'net zero' by 2030.

*The solar panels project was our most ambitious so far, so we knew we needed to find a really good company to do the work. (They) were very friendly and approachable, and were always mindful of the busy-ness of the site, being willing to work around the timings of the various events going on in the café and centre.*

*The panels look great on our roof, and the whole system is running very smoothly. In 2024 we hope to save 9.4 tonnes of CO2 and repeat this for many years to come.*

**— Liz Marlow, St. George's Church, Ashted**



# HOW WE WORK WITH CHURCHES

Sensitive design, backed by experience



*Solar installation at Grade II\* listed St. John's Church, Guildford*

## OUR APPROACH

We've worked with a wide range of churches and community buildings across the South East, fitting solar PV, battery storage and EV charging systems. From listed buildings to active community hubs, we understand the sensitivities involved - both in planning and in practice - and we work with respect at every stage.

Every church is different... in its history, structure, and community role. That's why we design each solar system with care, tailoring it to the specific needs of the building and congregation. With **SolaSkirt®** fitted as standard, and thoughtful system designs that support planning applications, our installations deliver lasting performance while maintaining the character of your building.

## OUR PROCESS

We offer a **free desktop survey** to assess whether solar is suitable for your building. This includes reviewing roof space, energy usage, and considering whether battery storage or EV charging may be beneficial. We're always happy to provide system designs to support funding or planning applications, and if and if the project moves forward, we also take care of submitting the grid application – helping to keep the process clear and manageable from the start.

As a company, we prioritise transparency. No upfront payment is required, and a deposit is only taken once a decision has been made to proceed. There are no hidden costs, and if circumstances change, the deposit is fully refundable – our aim is always to make the process open, straightforward and pressure-free.



# HOW OUR WORK TAKES SHAPE

## Tailored systems for unique buildings



### ST. GEORGE'S CHURCH, ASHTEAD

St George's Church in Ashtead chose Titan Eco via competitive tender to install a 132-panel solar system across six roof areas. Part-funded by the diocese and designed for both performance and appearance, the system is expected to generate 52,000kWh annually and save over £13,000 – a practical step in the church's long-term commitment to sustainability.

### ST. JOHN'S CHURCH, GUILDFORD

Titan Eco worked with St John's Church, a Grade II\* listed building, to deliver a sensitively designed solar system, partially obscured to respect the site's heritage. Part-funded through the VCSE Scheme and the Aviva Community Fund, the 27.56kWp system with 27kWh battery storage is expected to generate 27,000kWh annually, with savings of over £6,000.



### KING'S CHURCH, CHESSINGTON

The Kings Centre in Chessington partnered with Titan Eco to install a 40.32kWp solar system comprising 96 panels. The system is expected to generate around 38,500kWh annually, delivering estimated savings of £14,500 per year – a practical investment that supports both financial resilience and environmental responsibility.

### ASHTEAD PEACE MEMORIAL HALL

Ashtead Peace Memorial Hall's solar installation was part-funded by the UK Shared Prosperity Fund. The system includes 24.75kWp solar and 27kWh battery storage, and is expected to generate 23,700kWh annually, with annual savings of £9,350. The work was completed during the Hall's centenary celebrations, requiring careful planning around events.



# BECAUSE THE FINISH MATTERS

## Why we include SolaSkirt® as standard

### WHERE FORM MEETS FUNCTION

Pigeons nesting under solar panels has become an increasing issue in recent years, leading to mess, noise and potential damage to cables. SolaSkirt® is Titan Eco's trademark registered, design-protected pigeon-proofing system, developed to prevent these problems while finishing each installation with a clean, black edge. It is made from weather-resistant, powder-coated aluminium - and unlike most pigeon-proofing systems, SolaSkirt conceals the rails and cables beneath solar panels, combining practical protection with discreet, considered design.

### CONSIDERATIONS FOR PLANNING

A well-presented system can make a real difference in the planning process – particularly for listed churches or those in conservation areas. Including SolaSkirt in a system design helps demonstrate sensitivity to a building's character and increases the likelihood of gaining approval. SolaSkirt has helped secure planning permission in various listed buildings, including Grade II\* listed St John's Church in Guildford and [All Saints Church, in Bedworth](#) (installed by Optimum Electrics), where it was used to "hide the railings and underside of the panels, ensuring a neat and unobtrusive installation" to meet planning requirements.



*A clean finish with SolaSkirt® at King's Church, Chessington*



*Our church is grade II\* listed... the Diocesan Advice Committee brought up the issue of ensuring we had protection to stop animals getting in under the solar panels... We liked SolaSkirt in terms of the neatness and finished look of the panels, which looks much better than a lot of the other animal protection other companies were demonstrating. I'm sure the skirt helped get it over the line with permissions with both the DAC and council heritage advisor. — **David Curran, St John's Church, Guildford***





[www.titaneco.co.uk](http://www.titaneco.co.uk)



0333 444 2136



[info@titaneco.co.uk](mailto:info@titaneco.co.uk)



The Hay Barns, Barracks Farm, Cobham Rd, Fetcham, Leatherhead KT22 9TP